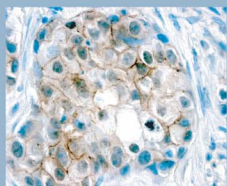
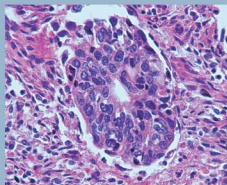




Full spectrum of services in tissue research:

- human tissue procurement
- biospecimen storage
- tissue processing
- slide preparation
- staining and data analysis.



www.CurelineBioPathology.com

Cureline BioPathology is a research histology laboratory providing high-quality tissue processing, staining and analysis to medical centers, academic institutions and biopharmaceutical companies.

CurelineBioPathology was founded by Cureline, Inc., a global biosample management company that has provided custom human tissue acquisition services to the biotechnology industry since 2003. Currently we offer a complete portfolio of services in human tissue research from biospecimen acquisition through comprehensive tissue analysis using immunohistochemistry (IHC) and special stains methods.

Our scientists consult on human tissue selection for your research project and support development of custom protocols. We provide histology services in:

- Human and animal tissue processing and slide preparation
- Full services for frozen tissues (OCT, slides, staining, TMA)
- Immunohistochemical staining (including digital imaging)
- Design and preparation of FFPE and frozen tissue microarrays
- Custom antibody cross-reactivity studies (human tissues)
- Support for human and animal toxicology studies
- Pathology report for animal and human non-clinical tissues

Our certified histologists have over 50 years of clinical histology experience with an emphasis on processing of diseased surgical human specimens. We provide clinical histology services in:

- Human clinical tissue processing and embedding
- Preparation of unstained and H&E stained tissue slides
- A variety of special stains for diagnostic purposes
- Immunohistochemical staining (clinical protocols)
- Local courier services and overnight project implementation